

Eugene

design DRAW Studio

Caratteristiche tecniche - Poltroncina realizzata in massello di noce americano o frassino. Seduta e schienale in multistrato imbottiti. Ferramenta in ottone.

Technical features - Small armchair made in solid American walnut or ash. Seat and back-rest in upholstered plywood. Hardware in brass.

Nota - Specificare la finitura del legno, tra quelle presenti a campionario.

Note - Specify the wood finish from the available samples.



72
28" $\frac{3}{8}$



47
18" $\frac{1}{2}$

50,5
19" $\frac{7}{8}$

50,5
19" $\frac{7}{8}$

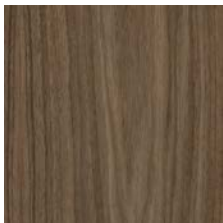
65
25" $\frac{5}{8}$

58
22" $\frac{7}{8}$

c.o.m. (l.mt.1,00/sq.mt.3,50)

Finiture / Finishes

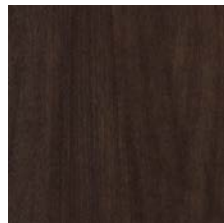
Legno Noce / Wood Walnut



Noce
Walnut



Noce dark
Walnut dark



Noce moka
Walnut moka



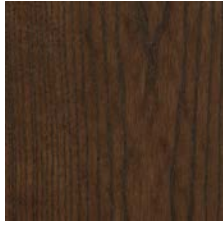
Noce brown
Walnut brown

Finiture / Finishes

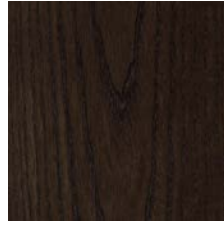
Legno Frassino / Wood Ash



Frassino sbiancato
Bleached ash



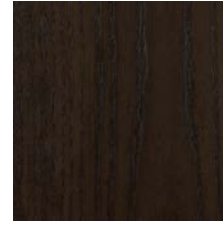
Frassino dark
Ash dark



Frassino moka
Ash moka



Frassino brown
Ash brown



Frassino wengè
Ash wengè



Frassino black
Ash black



Frassino moka PF
Ash moka PF



Frassino wengè PF
Ash wengè PF

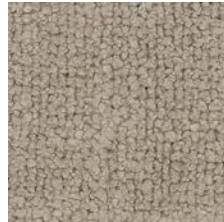
Tessuto / Fabric / Bouclè FL



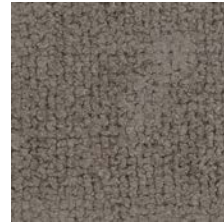
Bouclè FL 10



Bouclè FL 103



Bouclè FL 106



Bouclè FL 116



Bouclè FL 130



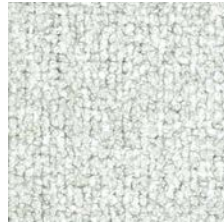
Bouclè FL 14



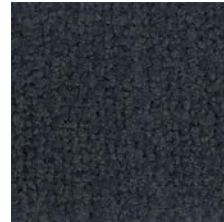
Bouclè FL 140



Bouclè FL 18



Bouclè FL 25



Bouclè FL 50



Bouclè FL 52



Bouclè FL 53



Bouclè FL 55



Bouclè FL 900

Finiture / Finishes

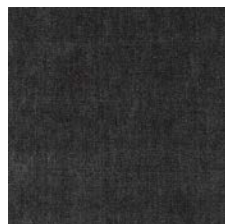
Tessuto Velluti e Ciniglie / Fabric Velvet and Chenille



Belsuede-029



Belsuede-032



Belsuede-015



Belsuede-014



Belsuede-01



Belsuede-036



Belsuede-016



Belsuede-017



Belsuede-040



Belsuede-034



Belsuede-010



Belsuede-011



Belsuede-012



Belsuede-039



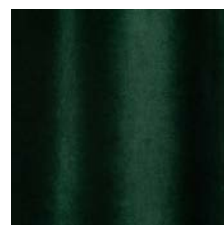
Amazonie-041



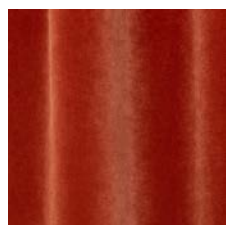
Amazonie-042



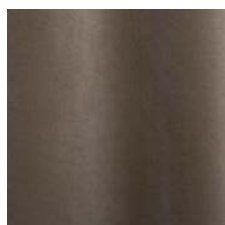
Amazonie 002



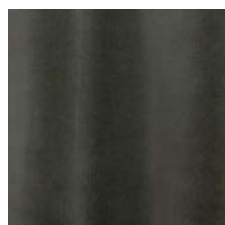
Amazonie 022



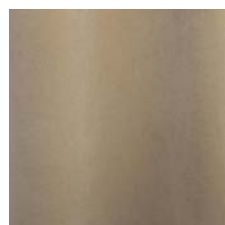
Amazonie 025



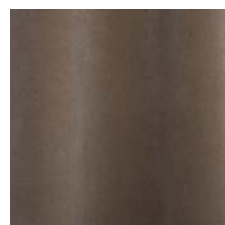
Amazonie 045



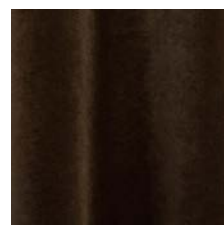
Amazonie 040



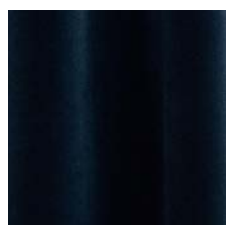
Amazonie 043



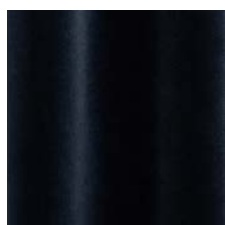
Amazonie 036



Amazonie 038



Amazonie 037



Amazonie 035

Tessuto / Fabric Bouclé



Verone Creme



Monza 00



Mies-005



Monza 09



Mies-004



Monza 07

Finiture / Finishes

Tessuto / Fabric Bouclé



Monza 97



Monza 84



Monza 58



Monza 27



Monza 48



Monza 45



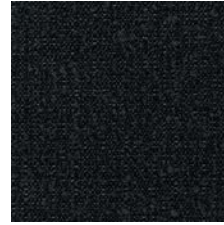
Verone Nuit



Mies-020

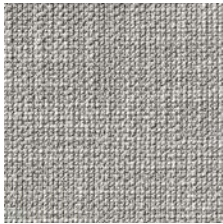


Monza 88

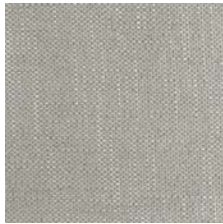


Mies-008

Tessuto Vari / Fabric Various



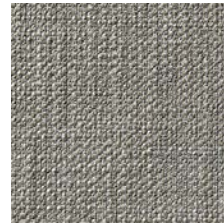
Gypsy-892



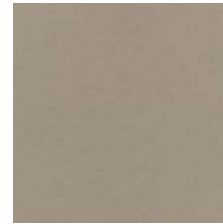
Flair-108



Nyul 001



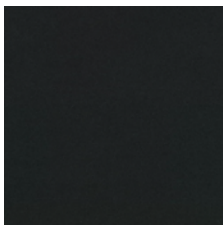
Gypsy-895



Divina 3 224



Oxford-893



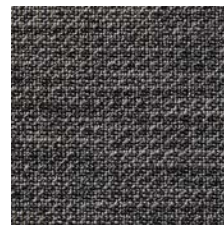
Divina 3-191



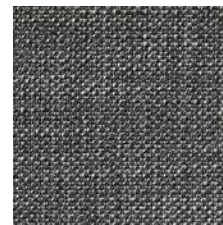
Oxford-897



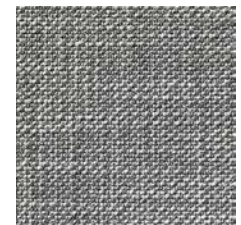
Flair-121



Oxford-999



Gypsy-997



Gypsy-995



Nyul 002



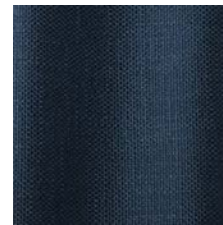
Nyul 003



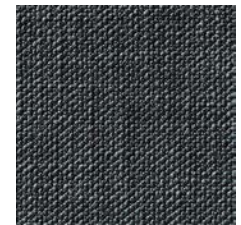
Flair 166



Oxford-889



Flair-164



Gypsy-699



Nyul 004



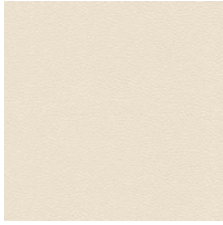
HURLUBERLU 003



HURLUBERLU 004

Finiture / Finishes

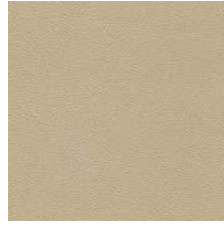
Pelle / Leather Color Sphere PF



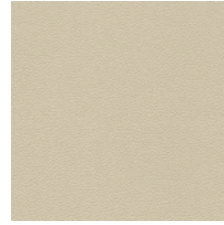
SC 06 Calicot



SC 23 Tortora



SC 32 Caolino



SC 51 Panna



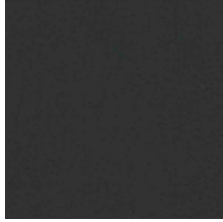
SC 31 Quarzo Fumè



SC 34 Maggese



SC 26 Topo



SC 20 Inchiostro



SC 21 Amianto



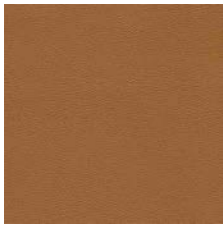
SC 53 Creta



SC 55 Camel Hair



SC 52 Daino



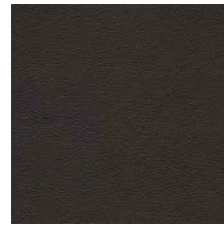
SC 66 India



SC 59 Noce di Pecan



SC 80 Bruno Havana



SC 29 Ardesia



SC 148 Lacca



SC 146 Coccio Pesto



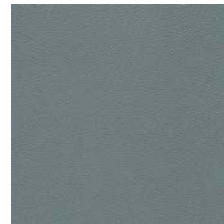
SC 173 Glauco



SC 177 Limo



SC 178 Alpi



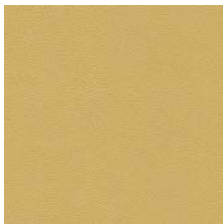
SC 254 Steel Blue



SC 278 Atlantic Blue



SC 279 Alchemy

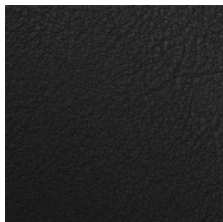


SC 133 Paglierino

PELLE SUPERIOR / SUPERIOR LEATHER



201 Testa di moro



202 Antracite



204 Fango



Velvety - Black Pepper



Velvety - Clary Sage



Velvety - Cumin

Finiture / Finishes

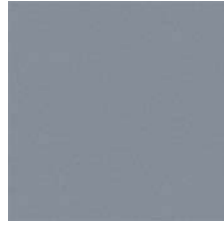
PELLE SUPERIOR / SUPERIOR LEATHER



Velvety - Deep
Lavender



Velvety - Grey Salt



Velvety - Juniper



Velvety - Paprika



Velvety - Rosemary



Velvety - Saffron



Velvety - Sesame