

# Teresa sgabello / stool

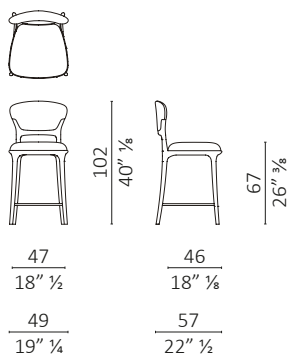
design Roberto Lazzeroni

**Caratteristiche tecniche** - Sgabello realizzato in massello di noce americano o frassino. Seduta e schienale in multistrato imbottiti. Poggiapiedi in acciaio satinato.

**Technical features** - Stool made in solid American walnut or ash. Seat and back-rest in upholstered plywood. Satin steel footrest.

**Nota** - Specificare la finitura del legno, tra quelle presenti a campionario.

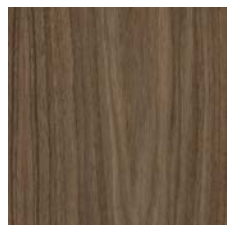
**Note** - Specify the wood finish from the available samples.



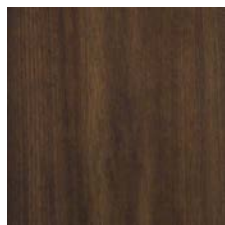
c.o.m. (l.mt.1,10/sq.mt.1,60)

## Finiture / Finishes

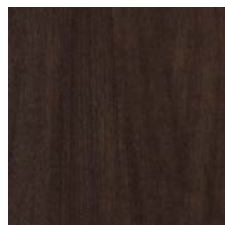
### Legno Noce / Wood Walnut



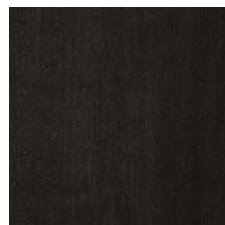
Noce  
Walnut



Noce dark  
Walnut dark



Noce moka  
Walnut moka



Noce brown  
Walnut brown

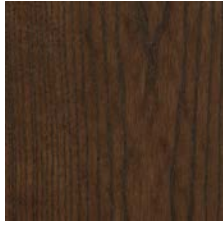
## Finiture / Finishes

### Legno Frassino / Wood Ash

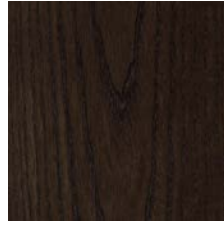
---



Frassino sbiancato  
*Bleached ash*



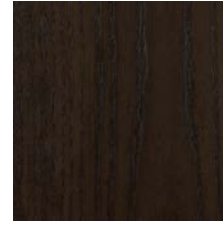
Frassino dark  
*Ash dark*



Frassino moka  
*Ash moka*



Frassino brown  
*Ash brown*



Frassino wengè  
*Ash wengè*



Frassino black  
*Ash black*



Frassino moka PF  
*Ash moka PF*



Frassino wengè PF  
*Ash wengè PF*

### Tessuto Velluti e Ciniglie / Fabric Velvet and Chenille

---



Belsuede-029



Belsuede-032



Belsuede-015



Belsuede-014



Belsuede-01



Belsuede-036



Belsuede-016



Belsuede-017



Belsuede-040



Belsuede-034



Belsuede-010



Belsuede-011



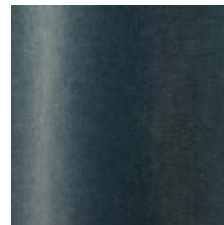
Belsuede-012



Belsuede-039



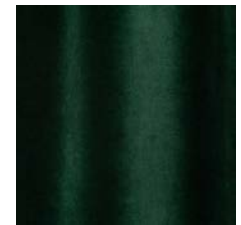
Amazonie-041



Amazonie-042



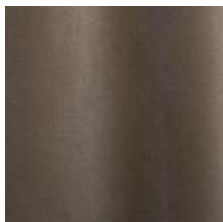
Amazonie 002



Amazonie 022



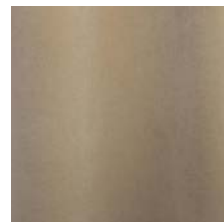
Amazonie 025



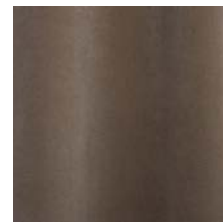
Amazonie 045



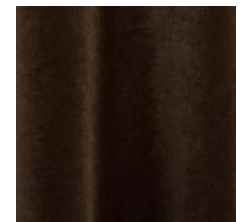
Amazonie 040



Amazonie 043



Amazonie 036

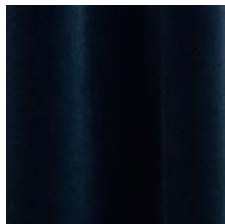


Amazonie 038

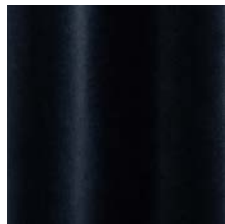
## Finiture / Finishes

### Tessuto Velluti e Ciniglie / Fabric Velvet and Chenille

---



Amazonie 037



Amazonie 035

### Tessuto / Fabric Bouclé

---



Verone Creme



Monza 00



Mies-005



Monza 09



Mies-004



Monza 07



Monza 97



Monza 84



Monza 58



Monza 27



Monza 48



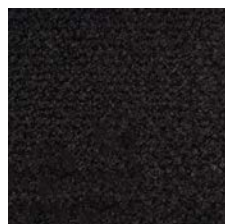
Monza 45



Verone Nuit



Mies-020



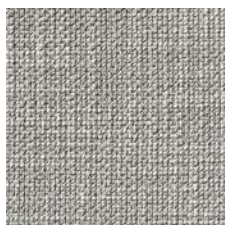
Monza 88



Mies-008

### Tessuto Vari / Fabric Various

---



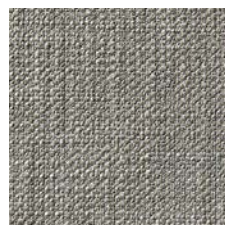
Gypsy-892



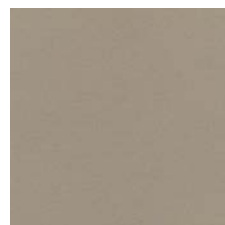
Flair-108



Nyul 001



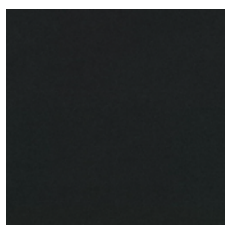
Gypsy-895



Divina 3 224



Oxford-893



Divina 3-191



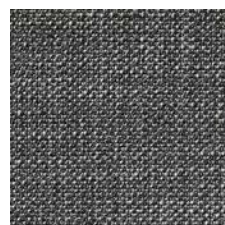
Oxford-897



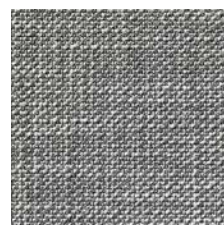
Flair-121



Oxford-999



Gypsy-997



Gypsy-995

## Finiture / Finishes

### Tessuto Vari / Fabric Various



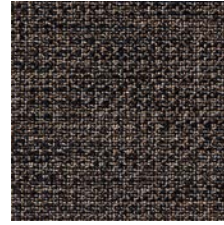
Nyul 002



Nyul 003



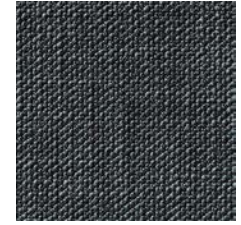
Flair 166



Oxford-889



Flair-164



Gypsy-699



Nyul 004

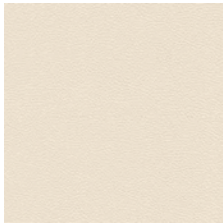


HURLUBERLU 003



HURLUBERLU 004

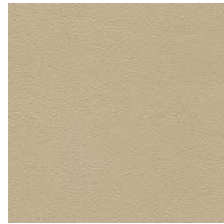
### Pelle / Leather Color Sphere PF



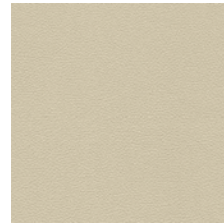
SC 06 Calicot



SC 23 Tortora



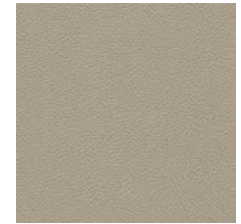
SC 32 Caolino



SC 51 Panna



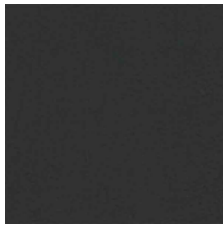
SC 31 Quarzo Fumè



SC 34 Maggese



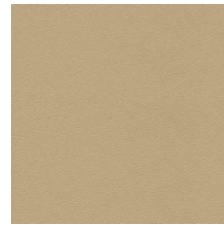
SC 26 Topo



SC 20 Inchiostro



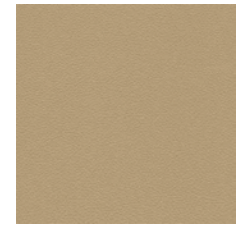
SC 21 Amianto



SC 53 Creta



SC 55 Camel Hair



SC 52 Daino



SC 66 India



SC 59 Noce di Pecan



SC 80 Bruno Havana



SC 29 Ardesia



SC 148 Lacca



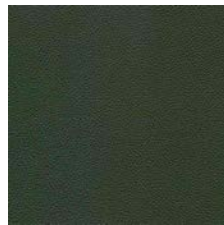
SC 146 Coccio Pesto



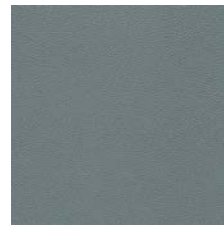
SC 173 Glauco



SC 177 Limo



SC 178 Alpi



SC 254 Steel Blue



SC 278 Atlantic Blue

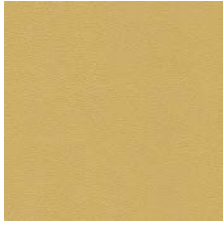


SC 279 Alchemy

## Finiture / Finishes

### Pelle / Leather Color Sphere PF

---



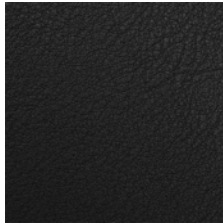
SC 133 Paglierino

### PELLE SUPERIOR / SUPERIOR LEATHER

---



201 Testa di moro



202 Antracite



204 Fango



Velvety - Black Pepper



Velvety - Clary Sage



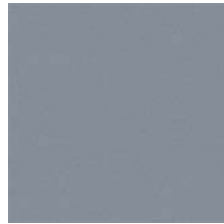
Velvety - Cumin



Velvety - Deep  
Lavender



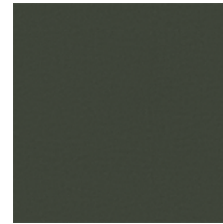
Velvety - Grey Salt



Velvety - Juniper



Velvety - Paprika



Velvety - Rosemary



Velvety - Saffron



Velvety - Sesame