

DUO Lounge – Roberto Lazzeroni – 2023



La DUO Lounge è la poltrona caratterizzata da linee soffici e generose eppure leggere, grazie alla solida struttura in legno massello di frassino tinto moka o wenge a vista che si snoda visivamente lungo i fianchi a comporre le gambe, in un contrasto di volumi e matericità che la rende ideale per sia per accompagnare il divano sia per vivere in autonomia.

CARATTERISTICHE TECNICHE

Struttura portante. Composta dai fianchi e dalla base a quattro gambe in legno massello di frassino a sezione triangolare disponibile in più finiture. Dei feltrini autoadesivi e incassati sono posti a protezione del pavimento.

Finitura struttura. In legno massello di:

- Frassino tinto wengé
- Frassino tinto moka

Scocca schienale e braccioli. Poliuretano espanso ottenuto da stampo con inserto metallico.

Imbottitura scocca. In poliuretano morbido ottenuto da stampo.

Cuscino seduta. In poliuretano espanso.

Molleggio seduta. Ottenuto con cinghie elastiche.

Rivestimento. Interamente in pelle o in tessuto.

- ColorSphere® (SC)
- Nest
- Soul
- Velvety
- Fabric A
- Fabric B
- Fabric C
- C.O.M.

Per verificare i tessuti disponibili si prega di consultare la tabella dedicata "Schema abbinamento prodotti-tessuti".

Sfoderabilità. Prevista solo per il cuscino seduta sia con rivestimento in pelle che in tessuto.

Dettagli estetici. Le cuciture sono realizzate con filo tono su tono. Il logo Poltrona Frau è impresso a caldo sul retro seduta nella versione in pelle, mentre sulla versione in tessuto è impresso su una linguetta in cuoio.

The armchair DUO Lounge features soft and generous yet light lines thanks to the visible solid ash wood frame that visually winds along the sides to form the legs, providing a contrast of volumes and textures.

TECHNICAL FEATURES

Load bearing structure. With sides, base and four feet in triangular section solid ash available in various finishes. Self-adhesive recessed felt pads are included to protect the floor.

Base finish. In solid wood:

- Ash in a wenge stain
- Ash in a moka stain

Back rest and armrest shell. Moulded rigid polyurethane with a metal insert.

Shell padding. Soft moulded polyurethane.

Seat cushion. In polyurethane foam.

Seat springs. Achieved using elastic straps.

Upholstery. Entirely in Pelle Frau® leather or fabric.

- ColorSphere® (SC)
- Nest
- Soul
- Velvety
- Fabric A
- Fabric B
- Fabric C
- C.O.M.

To verify the available fabrics please consult the dedicated table "Combination models-fabrics pattern".

Removability. Only for the seat cushion with leather and fabric cover.

Aesthetic details. The stitching is tone-on-tone. The Poltrona Frau logo is hot stamped on the back of the seat in the leather version, while in the fabric version it is stamped on a leather tag.

5687111



70 / 27"½
67 / 26"½
44 / 17"¾



54 / 21"¼ 47-65 / 18"½-25"½
77 / 30"¼ 78 / 30"¾



SC 05 Stucco



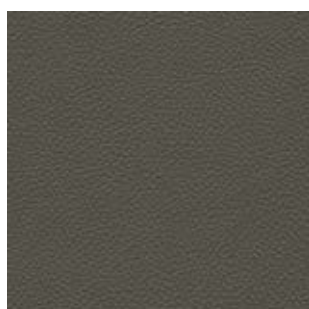
SC 20 Inchiostro



SC 21 Amianto



SC 26 Topo



SC 28 Seppia



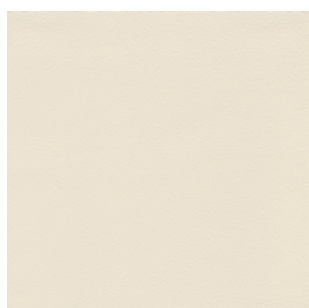
SC 31 Quarzo Fumé



SC 34 Maggese



SC 40 Cachemire



SC 06 Calicot



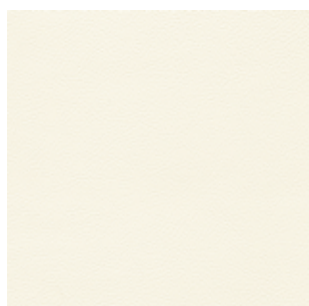
SC 19 Georgette



SC 22 Chiffon



SC 23 Tortora



SC 0 Polare



SC 04 Latte



SC 32 Caolino



SC 33 Travertino



SC 51 Panna



SC 42 Maquillage



SC 44 Noisette



SC 46 Biscuit



SC 52 Daino



SC 53 Creta



SC 55 Camel Hair



SC 56 Siena



SC 65 Vachette



SC 66 India



SC 67 Chiodi di Garofano



SC 68 Sahara



SC 69 Iroko



SC 29 Ardesia



SC 57 Torba



SC 59 Noce di Pecan



SC 80 Bruno Havana



SC 100 Fondant



SC 92 Garnet



SC 93 Brossura



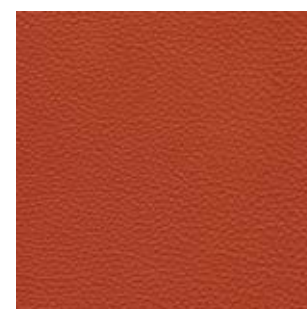
SC 99 Carrubo



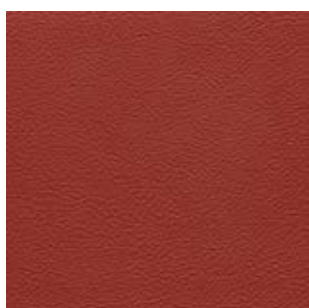
SC 127 Siam



SC 128 Carminio



SC 146 Coccio Pesto



SC 148 Lacca



SC 10 Antracite



SC 178 Alpi



SC 187 Selva



SC 209 Cypress



SC 280 Abyss



SC 173 Glauco



SC 176 Darsena



SC 177 Limo



SC 179 Brughiera



SC 180 Celadon



SC 233 Bardiglio



SC 254 Steel Blue



SC 274 Fresco Blue



SC 276 Mineral Blue



SC 278 Atlantic Blue



SC 140 Mimosa



SC 255 Belladonna



SC 256 Ume



SC 258 Mist



SC 279 Alchemy



SC 96 Mattone



SC 132 Eggshell



SC 133 Paglierino



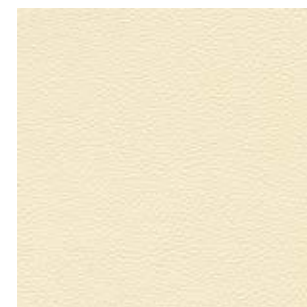
SC 188 Viridiana



SC 248 Iris



SC 250 Vermillon



SC 01 Avorio



SC 48 Tonka



SC 74 Nocciola



SC 120 Calypso



SC 136 Ginger Bread



SC 175 Bengali Green



Ambra



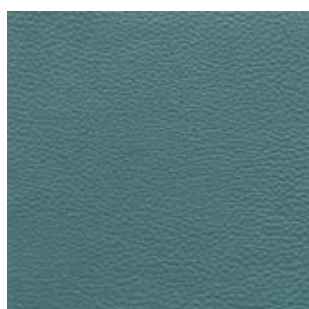
Ammonite



Arenaria



Argilla



Azul



Calcedonio



Cemento



Eliodoro



Grafite



Granato



Larimar



Luna



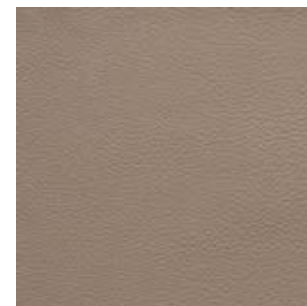
Madreperla



Malachite



Marte



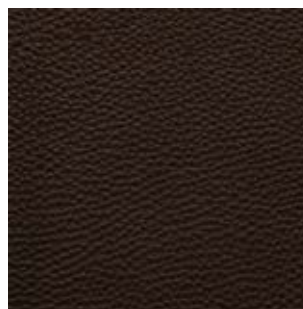
Pomice



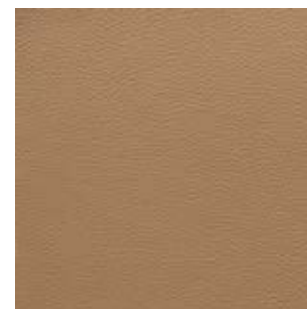
Salgemma



Silice



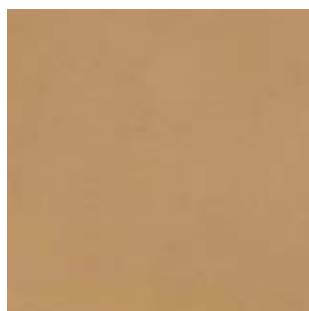
Terra di Cassel



Tufo



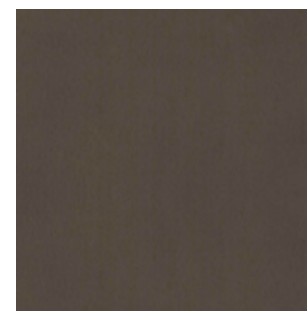
Amy



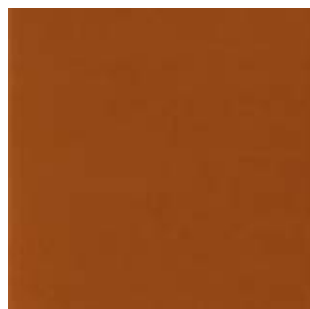
Anita



Diana



Dusty



Joe



Nina



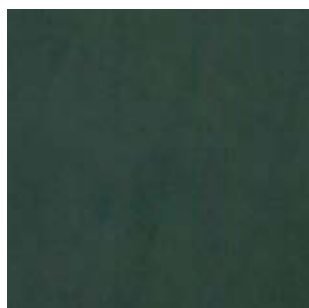
Otis



Ray



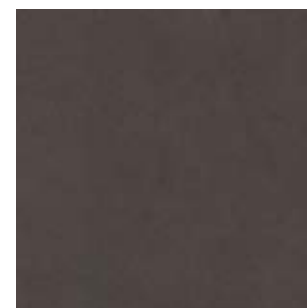
Smokey



Stevie



Whitney



Wilson



Black Pepper



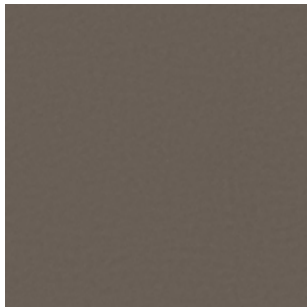
Clary Sage



Cumin



Deep Lavender



Grey Salt



Juniper



Paprika



Rosemary



Saffron

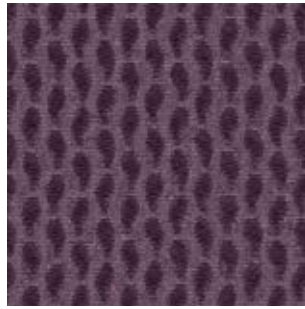


Sesame

Category A | 70%WV - 20%VI - 7%CO - 3%LI



Scarlet



Aubergine



Moss



Rice Paper



Pewter

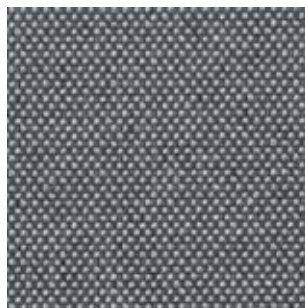


Silver Birch

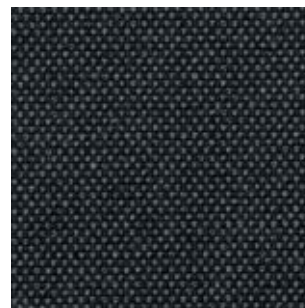
Category B | 44% CO - 21% PC - 20% PL - 15% WO



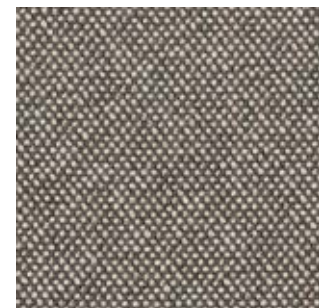
101



102



103



104



105

POLTRONA FRAU FABRICS

DAMIÈ

Category B | 47% CO - 18% LI - 35% VI



429.011



429.031



429.032



429.052



429.058



429.090



429.110

POLTRONA FRAU FABRICS

GABÀN

Category B | 45%CO - 43%WV - 3%PA - 1%WP - 8%AF



1



5



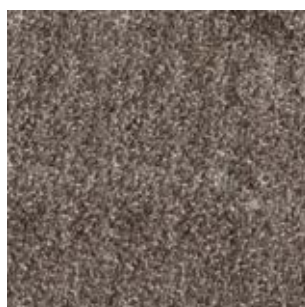
7



10



13



5403

POLTRONA FRAU FABRICS

GIANO

Category A | 76% WO - 15% PL - 6% PA - 3%AF



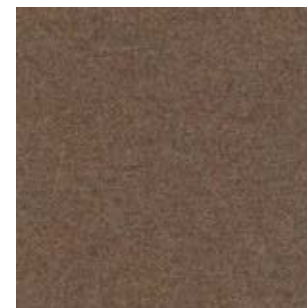
3 lighter side



3 darker side



7 lighter side



7 darker side



9 lighter side



9 darker side

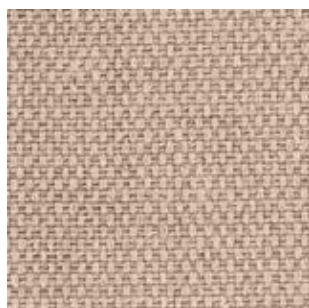
POLTRONA FRAU FABRICS

GUATEMALA

Category B | 76% LI - 24% CO



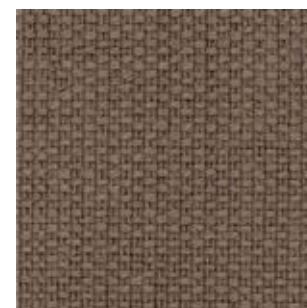
Bianco



Ecrú



Grigio



Castoro



Sughero



Piombo



Lavagna

Category A | 55%LI - 20%VI - 15%WO - 5%CO - 5%PL



Light Brown



Light Grey

Category B | 37% LI - 19% CO - 44% VI



01



05



07



08



09



10



11



17



24

POLTRONA FRAU FABRICS

LOOP

Category B | 45% CO - 15% WO - 13% AC - 19% VI - 8% NY



02 Corda



13 Fumo



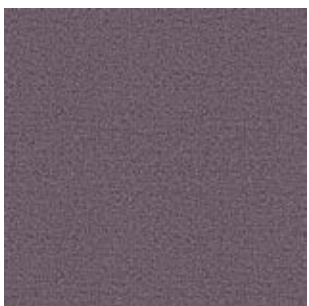
Blu



Greggio



Marrone

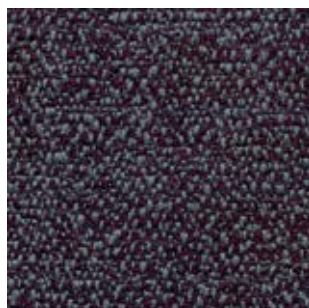


Prugna

POLTRONA FRAU FABRICS

MELANGE

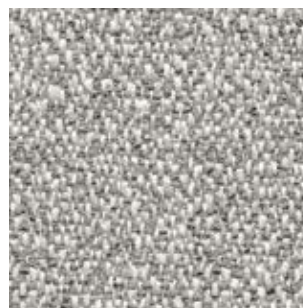
Category B | 22% VI - 25% PC - 21% PL - 17% CO - 12% LI - 3% WO



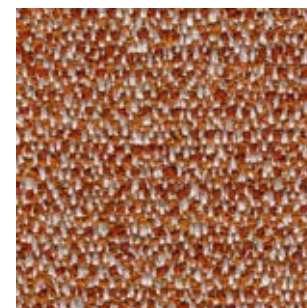
4 Agata



5 Lapislazzuli



6 Argento



7 Rame

Category B | 64% VI - 15% PL - 11% CO - 10% LI



03

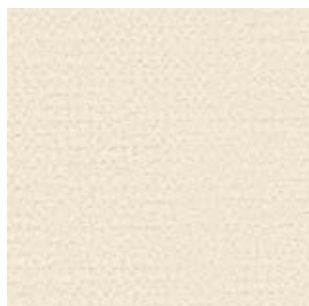


05

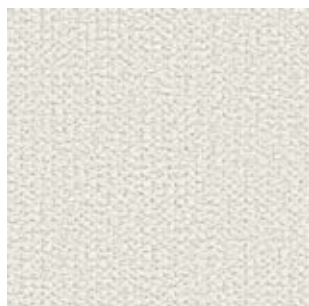


10

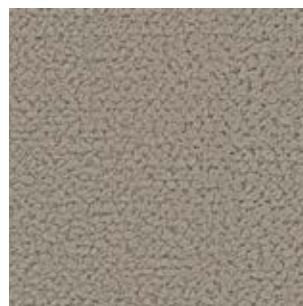
Category B | 70%CO - 16%VI - 12%LI - 2%PL



Milk



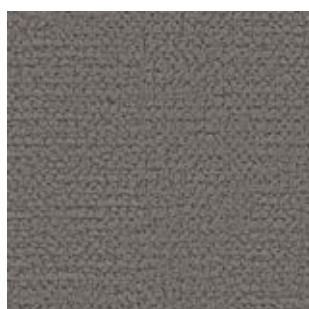
Fog



Dune



Slate

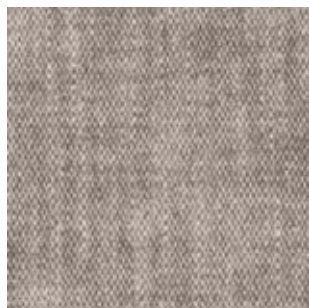


Truffle

Category B | 70% VI - 30% LI



Bianco 01



Testa di moro 10



Topo 12

Category B | 70% VI - 30% LI



1700



1705



1710



1722



1724



1760

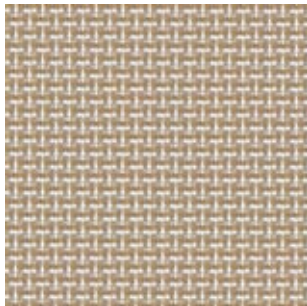


1762

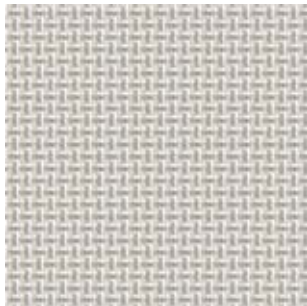


1779

Category C | 72% PL GRS - 28%CO GRS



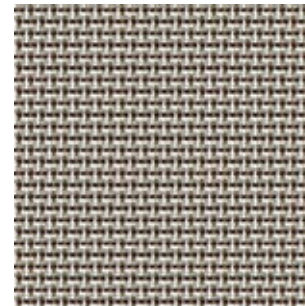
Blonde Woods



Frozen Whites



Into the Black

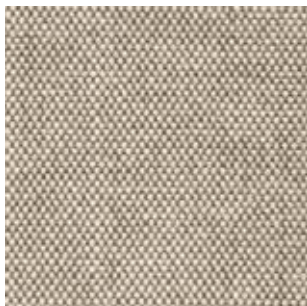


Pier 1

Category B | 56% CO - 44% VI



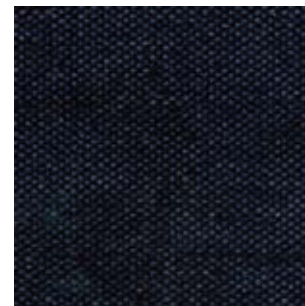
Silver



Beige



Forest



Black Iris



Starry blue

Category B | 58%CS - 30%FR - 8%MA - 4%VI



Sunflower



Terracota



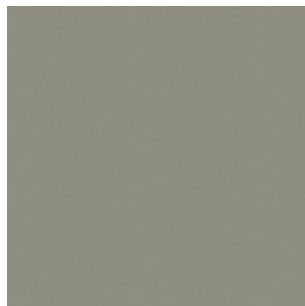
Red Onion



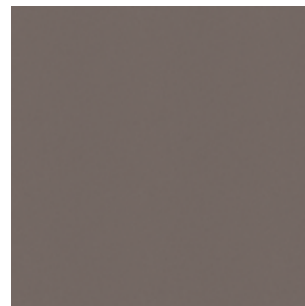
Burgundy



Oatmeal



Limon Verde



Light Lilac



Coyote Brown



Sequoia Green



Olive Drab



Coffe Bean



Midnight Blue



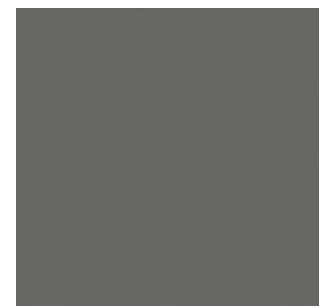
Ultramarine



Chalk White



Bleach Blue



Wolf Grey