

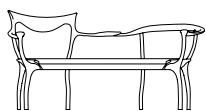
**D.R.D.P.** design Roberto Lazzeroni

**Caratteristiche tecniche** - Divanetto in massello di noce americano con seduta in multistrato imbottita. Vassoio in vetro sabbiato con finitura argento.

**Technical features** - Two seater in solid American walnut with seat in upholstered plywood. Tray with silver finished sandblasted glass top.

**Nota** - Costo aggiuntivo per finitura gommalacca.

**Note** - Additional cost for shellac finish.



82

32" 1/4



42

16" 1/2

61

24"

165

65"

80

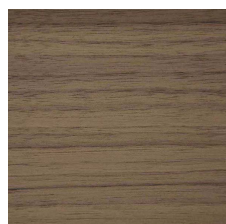
31" 1/2

**c.o.m.** (l.mt.1,40/sq.mt.2,50)

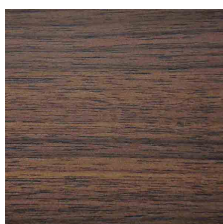
**volume m<sup>3</sup>** 1,958 - **kg.** 60

## Finiture / Finiture

### Legno Noce / Wood Walnut



noce  
walnut



noce dark  
walnut dark



noce moka  
walnut moka

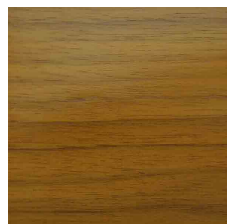


noce brown  
walnut brown

## Finiture / Finiture

### Legno Gommalacca / Wood Shellac

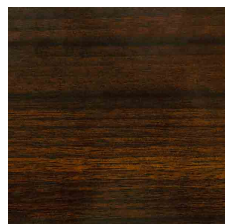
---



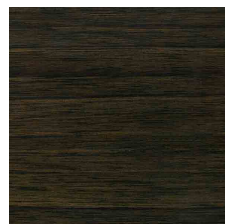
Noce Am. gommalacca  
naturale  
*Am. walnut natural  
shellac*



Noce Am. gommalacca  
nera  
*Am. walnut dark shellac*



Noce Am. olio iris  
*Am. walnut Iris oil*



Noce Am. olio nero  
*Am. walnut black oil*

### Tessuto Velluti e Ciniglie / Fabric Velvet and Chenille

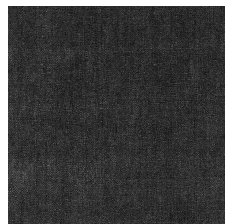
---



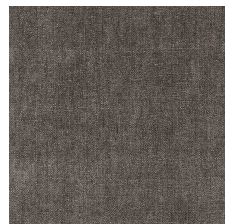
Belsuede-029



Belsuede-032



Belsuede-015



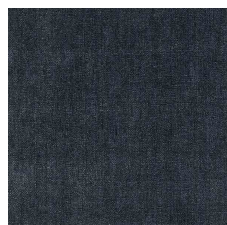
Belsuede-014



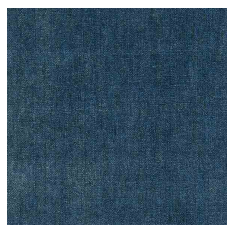
Belsuede-01



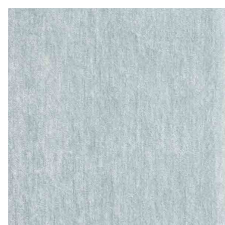
Belsuede-036



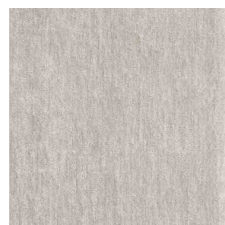
Belsuede-016



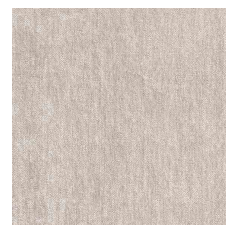
Belsuede-017



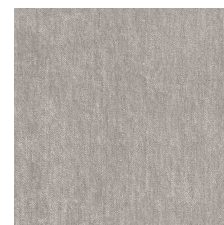
Belsuede-040



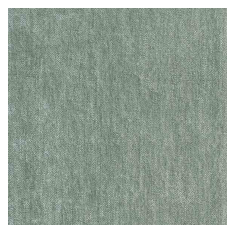
Belesuede-034



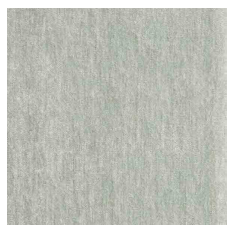
Belsuede-010



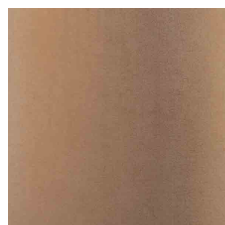
Belsuede-011



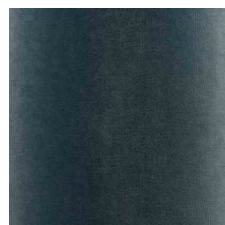
Belsuede-012



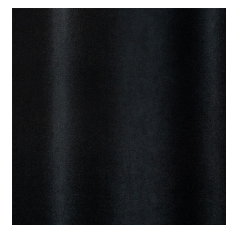
Belsuede-039



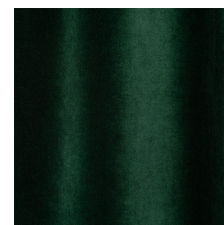
Amazonie-041



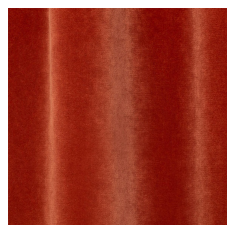
Amazonie-042



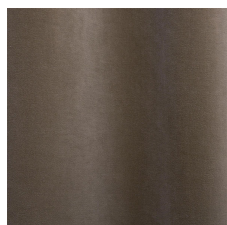
Amazonie 002



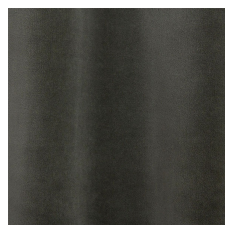
Amazonie 022



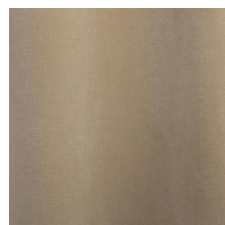
Amazonie 025



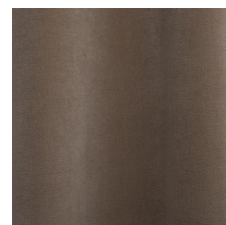
Amazonie 045



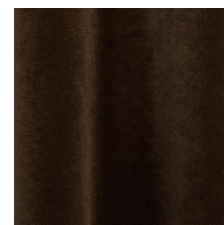
Amazonie 040



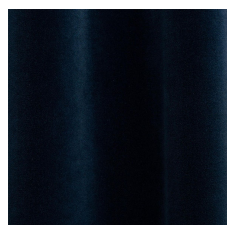
Amazonie 043



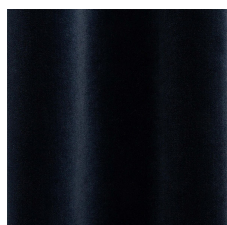
Amazonie 036



Amazonie 038



Amazonie 037



Amazonie 035



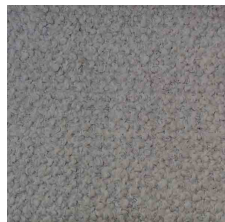
## Finiture / Finiture

### Tessuto / Fabric Bouclé

---



Verone Creme



Monza 00



Mies-005



Monza 09



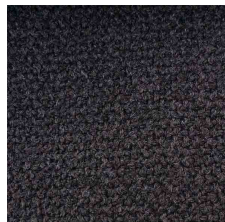
Mies-004



Monza 07



Monza 97



Monza 84



Monza 58



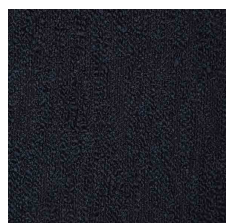
Monza 27



Monza 48



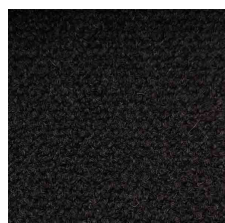
Monza 45



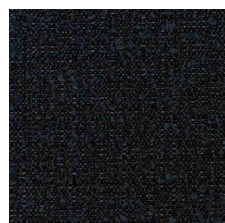
Verone Nuit



Mies-020



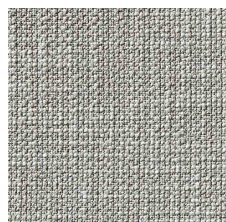
Monza 88



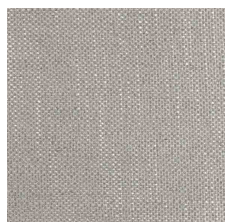
Mies-008

### Tessuto Vari / Fabric Various

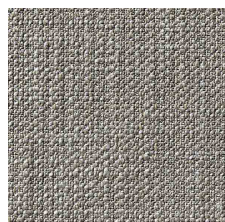
---



Gypsy-892



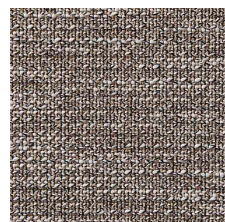
Flair-108



Gypsy-895



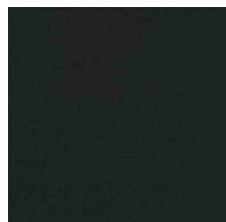
Divina 3 224



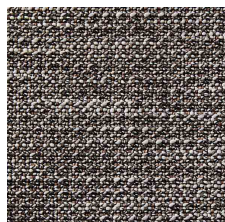
Oxford-893



Grisaille-004



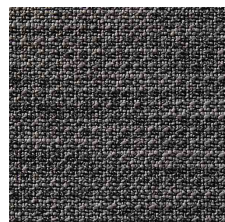
Divina 3-191



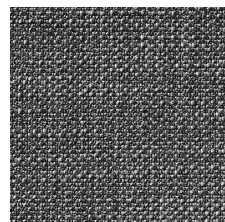
Oxford-897



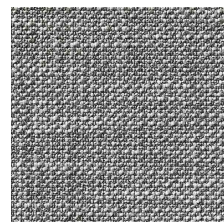
Flair-121



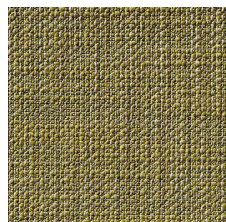
Oxford-999



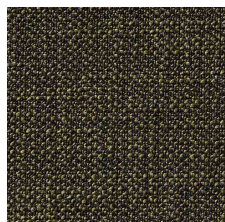
Gypsy-997



Gypsy-995



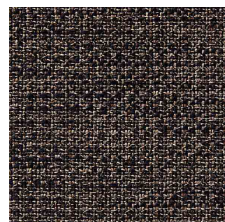
Gypsy-184



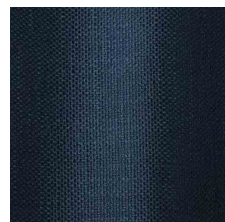
Gypsy-799



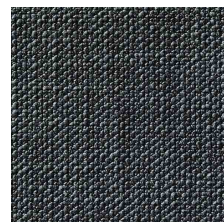
Flair 166



Oxford-889



Flair-164



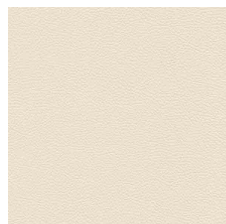
Gypsy-699



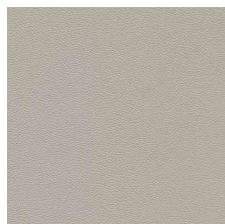
## Finiture / Finiture

### Pelle / Leather Color Sphere PF

---



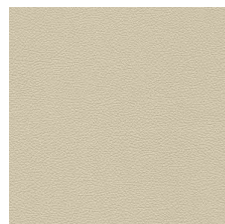
SC 06 Calicot



SC 23 Tortora



SC 32 Caolino



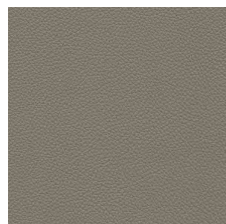
SC 51 Panna



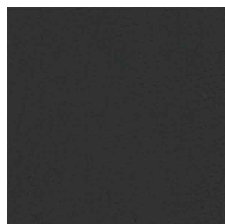
SC 31 Quarzo Fumè



SC 34 Maggese



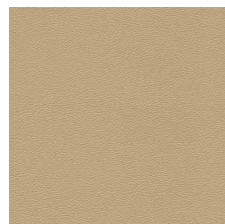
SC 26 Topo



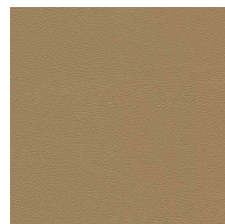
SC 20 Inchiostro



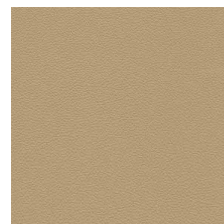
SC 21 Amianto



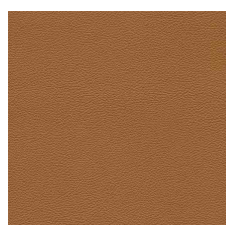
SC 53 Creta



SC 55 Camel Hair



SC 52 Daino



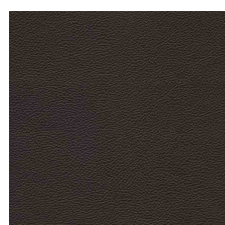
SC 66 India



SC 59 Noce di Pecan



SC 80 Bruno Havana



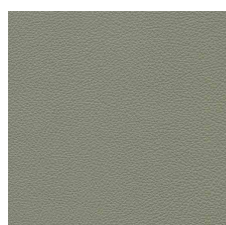
SC 29 Ardesia



SC 148 Lacca



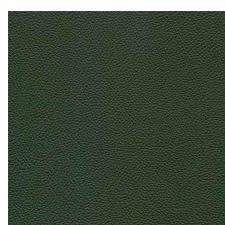
SC 146 Coccio Pesto



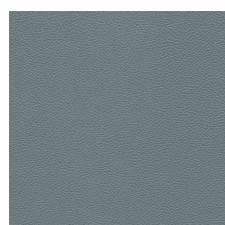
SC 173 Glauco



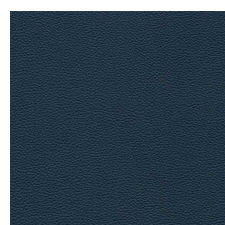
SC 177 Limo



SC 178 Alpi



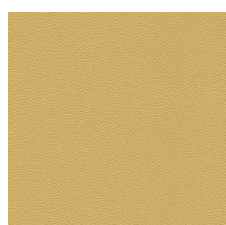
SC 254 Steel Blue



SC 278 Atlantic Blue



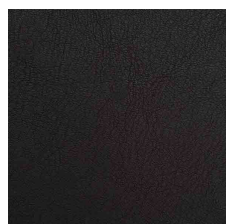
SC 279 Alchemy



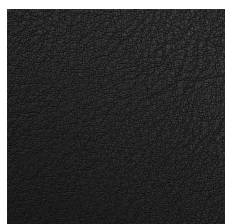
SC 133 Paglierino

### Pelle naturale / Natural leather Acquario

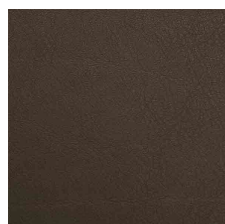
---



201 Testa di moro



202 Antracite



204 Fango



## Finiture / *Finiture*

### Pelle naturale / *Natural leather Nabuk*

---



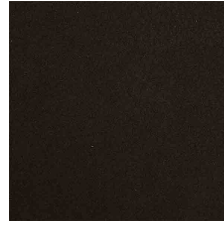
Nabuk Grigio



Nabuk Conchiglia



Nabuk Seppia



Nabuk Marrone Scuro