

Caratteristiche tecniche - Divano con struttura interna realizzata in multistrato e base in massello di noce americano. Seduta con trapuntatura e schienale imbottiti. Piedini in ottone.

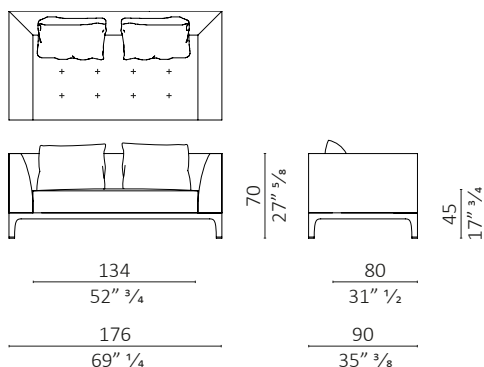
Technical features - Sofa with internal structure made in plywood and base in solid American walnut. Upholstered quilted seat and upholstered back-rest. Leg tips in brass.

Nota - Su richiesta seduta liscia senza trapuntatura (per quantitativo tessuto/pelle cliente contattare l'azienda).

Note - On request plain seat without quilting (for fabric/leather requirements contact the company).



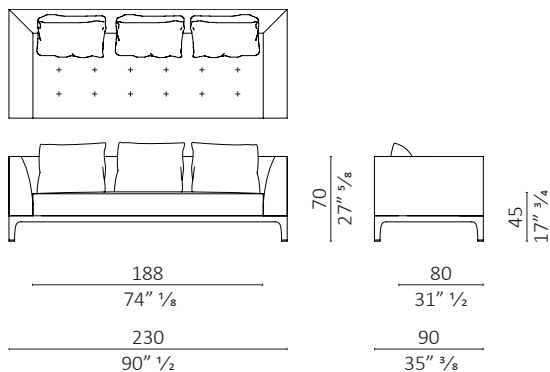
Giò 176



c.o.m. (l.mt.8,80/sq.mt.29,00)

volume m³ 1,628 - **kg.** 100

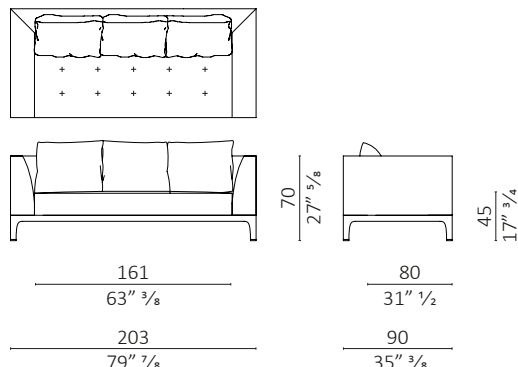
Giò 230



c.o.m. (l.mt.9,50/sq.mt.22,00)

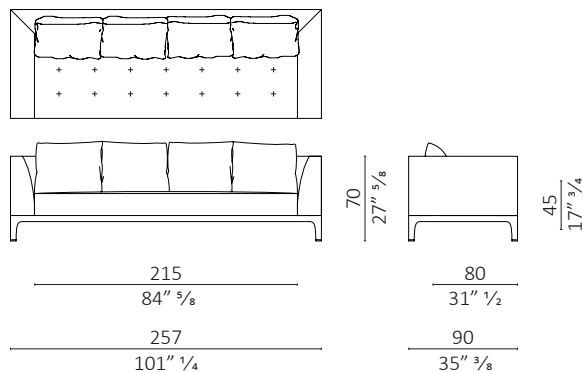
volume m³ 2,086 - **kg.** 120

Giò 203



volume m³ 1,857 - **kg.** 110

Giò 257



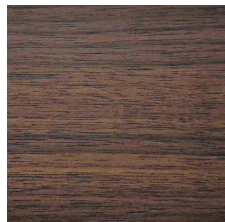
volume m³ 2,315 - **kg.** 130

Finiture / Finiture

Legno Noce / Wood Walnut



noce
walnut



noce dark
walnut dark

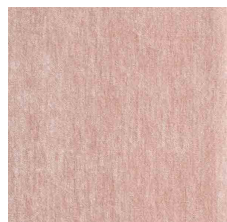


noce moka
walnut moka



noce brown
walnut brown

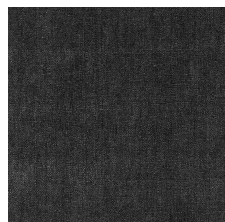
Tessuto Velluti e Ciniglie / Fabric Velvet and Chenille



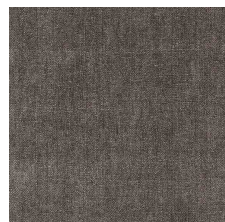
Belsuede-029



Belsuede-032



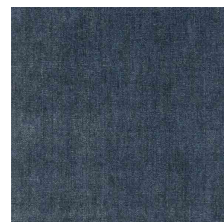
Belsuede-015



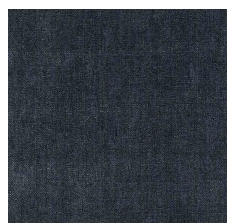
Belsuede-014



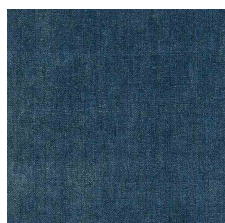
Belsuede-01



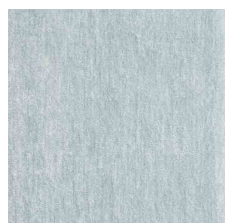
Belsuede-036



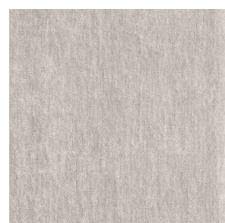
Belsuede-016



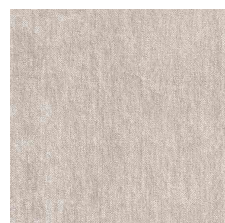
Belsuede-017



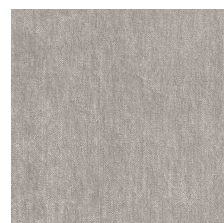
Belsuede-040



Belesuede-034



Belsuede-010



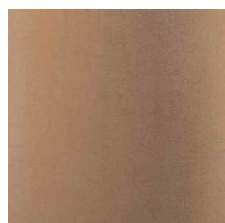
Belsuede-011



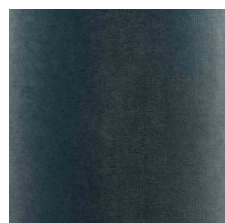
Belsuede-012



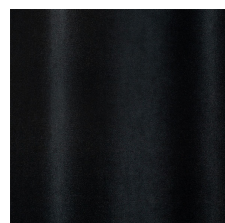
Belsuede-039



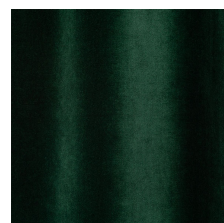
Amazonie-041



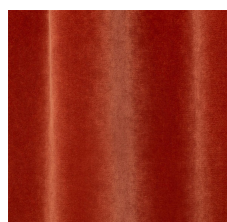
Amazonie-042



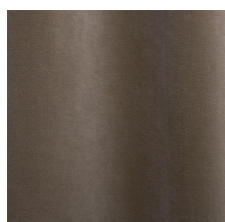
Amazonie 002



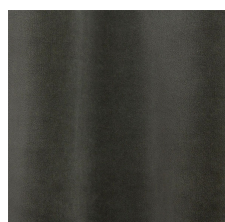
Amazonie 022



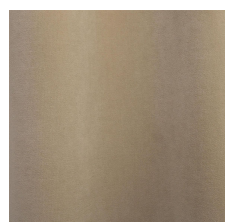
Amazonie 025



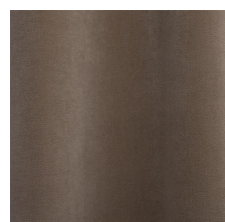
Amazonie 045



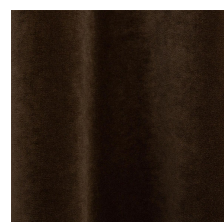
Amazonie 040



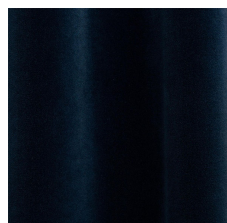
Amazonie 043



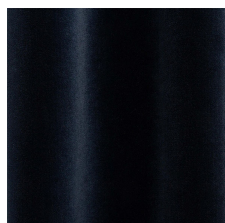
Amazonie 036



Amazonie 038



Amazonie 037



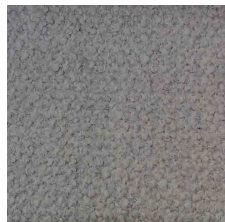
Amazonie 035

Finiture / Finiture

Tessuto / Fabric Bouclé



Verone Creme



Monza 00



Mies-005



Monza 09



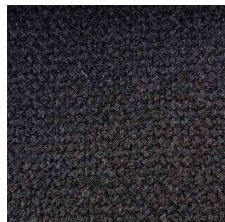
Mies-004



Monza 07



Monza 97



Monza 84



Monza 58



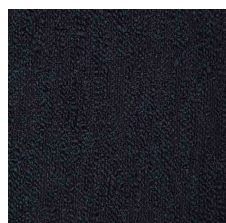
Monza 27



Monza 48



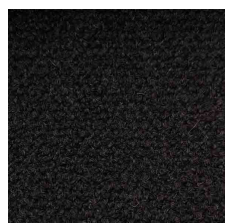
Monza 45



Verone Nuit



Mies-020

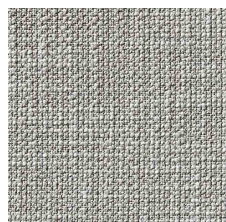


Monza 88

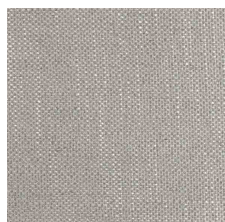


Mies-008

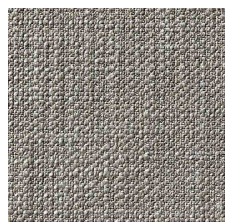
Tessuto Vari / Fabric Various



Gypsy-892



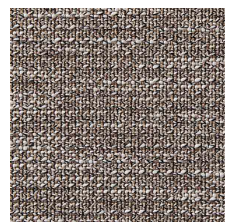
Flair-108



Gypsy-895



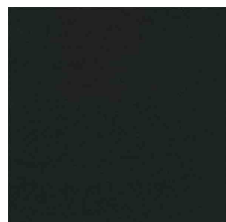
Divina 3 224



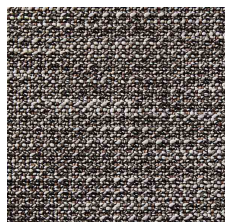
Oxford-893



Grisaille-004



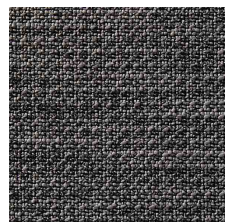
Divina 3-191



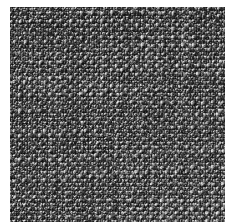
Oxford-897



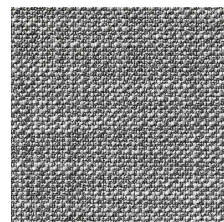
Flair-121



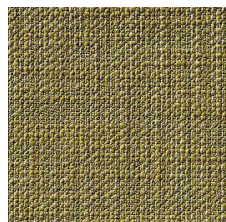
Oxford-999



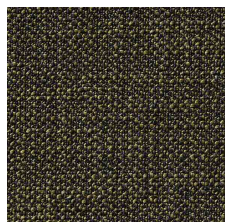
Gypsy-997



Gypsy-995



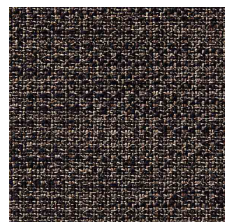
Gypsy-184



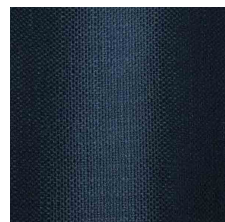
Gypsy-799



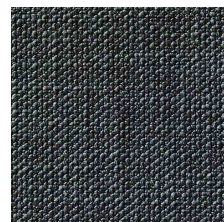
Flair 166



Oxford-889



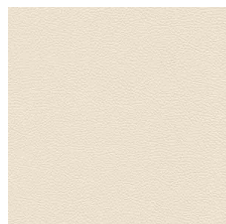
Flair-164



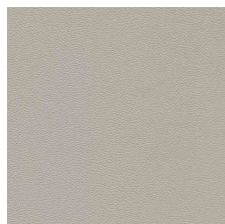
Gypsy-699

Finiture / Finiture

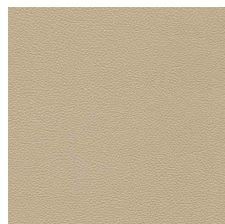
Pelle / Leather Color Sphere PF



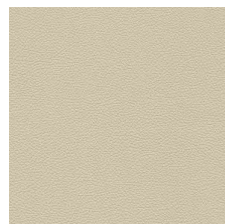
SC 06 Calicot



SC 23 Tortora



SC 32 Caolino



SC 51 Panna



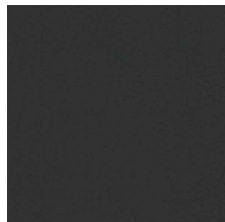
SC 31 Quarzo Fumè



SC 34 Maggese



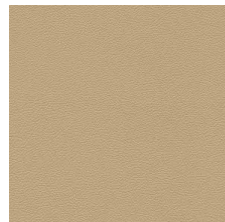
SC 26 Topo



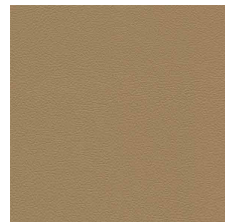
SC 20 Inchiostro



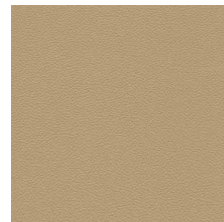
SC 21 Amianto



SC 53 Creta



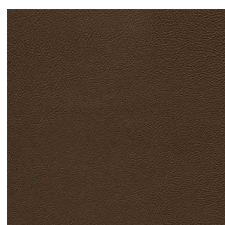
SC 55 Camel Hair



SC 52 Daino



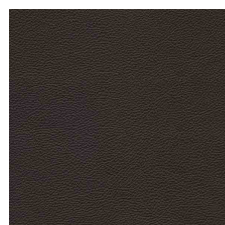
SC 66 India



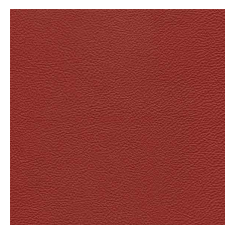
SC 59 Noce di Pecan



SC 80 Bruno Havana



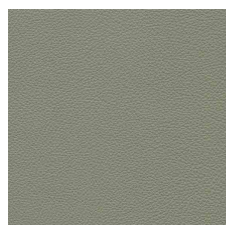
SC 29 Ardesia



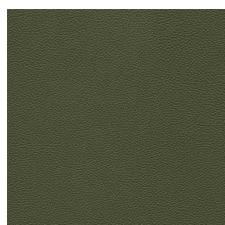
SC 148 Lacca



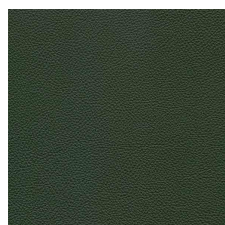
SC 146 Coccio Pesto



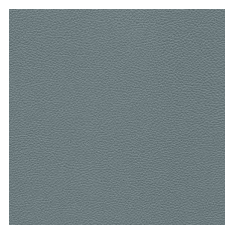
SC 173 Glauco



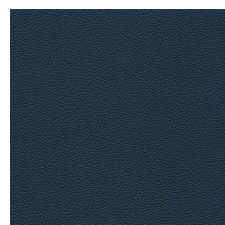
SC 177 Limo



SC 178 Alpi



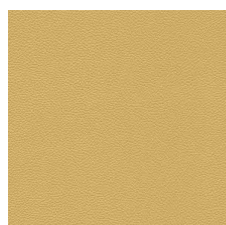
SC 254 Steel Blue



SC 278 Atlantic Blue

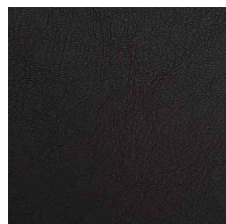


SC 279 Alchemy

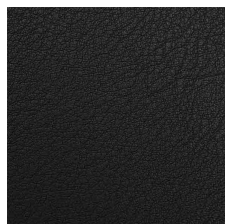


SC 133 Paglierino

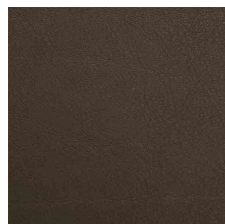
Pelle naturale / Natural leather Acquario



201 Testa di moro



202 Antracite



204 Fango

Finiture / *Finiture*

Pelle naturale / *Natural leather Nabuk*



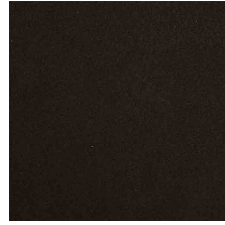
Nabuk Grigio



Nabuk Conchiglia



Nabuk Seppia



Nabuk Marrone Scuro