

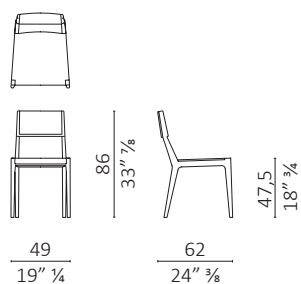
Ala

design Giuseppe Casarosa

Caratteristiche tecniche - Sedia realizzata in massello di noce americano o frassino. Seduta e schienale in multistrato di pioppo, imbottiti.
Technical features - Chair made in solid American walnut or ash. Seat and back-rest in upholstered poplar plywood.

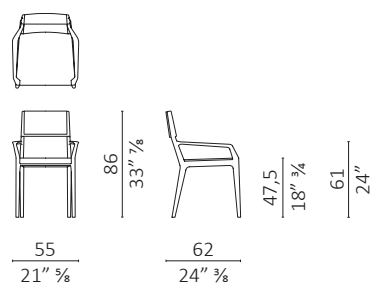


Ala



c.o.m. (l.mt.0,75/sq.mt.1,10)
volume m³ 0,484x2 - **kg.** 17,5

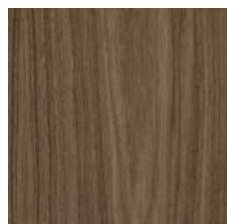
Ala con braccioli / with armrests



c.o.m. (l.mt.0,75/sq.mt.1,10)
volume m³ 0,392 - **kg.** 11

Finiture / Finishes

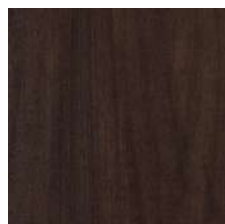
Legno Noce / Wood Walnut



Noce
Walnut



Noce dark
Walnut dark



Noce moka
Walnut moka



Noce brown
Walnut brown

Finiture / Finishes

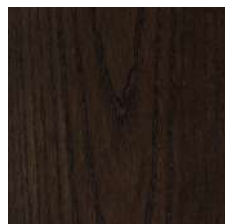
Legno Frassino / Wood Ash



Frassino sbiancato
Bleached ash



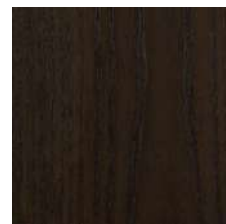
Frassino dark
Ash dark



Frassino moka
Ash moka



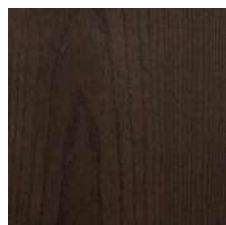
Frassino brown
Ash brown



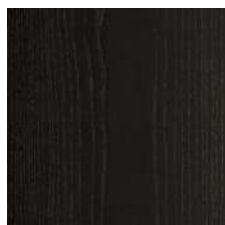
Frassino wengè
Ash wengè



Frassino black
Ash black



Frassino moka PF
Ash moka PF



Frassino wengè PF
Ash wengè PF

Tessuto Velluti e Ciniglie / Fabric Velvet and Chenille



Belsuede-029



Belsuede-032



Belsuede-015



Belsuede-014



Belsuede-01



Belsuede-036



Belsuede-016



Belsuede-017



Belsuede-040



Belsuede-034



Belsuede-010



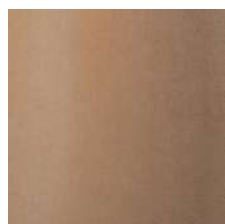
Belsuede-011



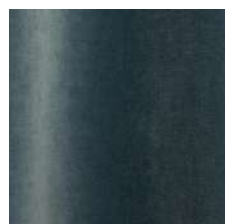
Belsuede-012



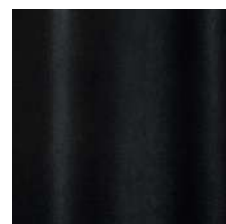
Belsuede-039



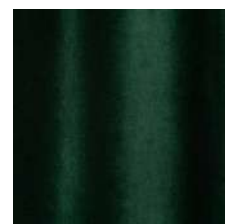
Amazonie-041



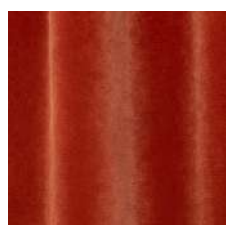
Amazonie-042



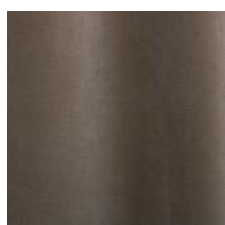
Amazonie 002



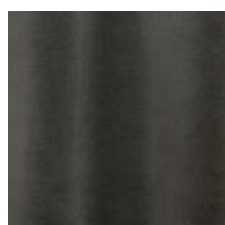
Amazonie 022



Amazonie 025



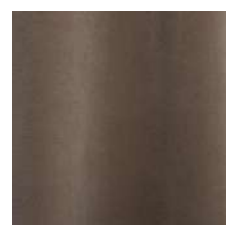
Amazonie 045



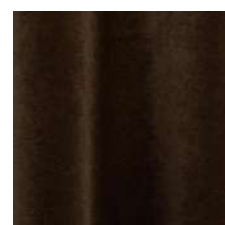
Amazonie 040



Amazonie 043



Amazonie 036



Amazonie 038

Finiture / Finishes

Tessuto Velluti e Ciniglie / Fabric Velvet and Chenille



Amazonie 037



Amazonie 035

Tessuto / Fabric Bouclé



Verone Creme



Monza 00



Mies-005



Monza 09



Mies-004



Monza 07



Monza 97



Monza 84



Monza 58



Monza 27



Monza 48



Monza 45



Verone Nuit



Mies-020

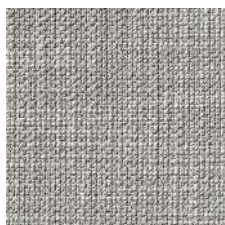


Monza 88

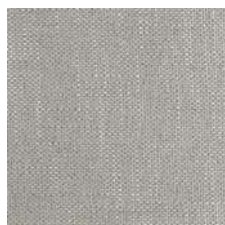


Mies-008

Tessuto Vari / Fabric Various



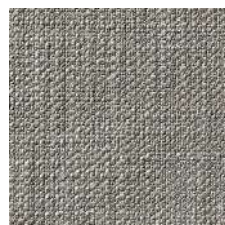
Gypsy-892



Flair-108



Nyul 001



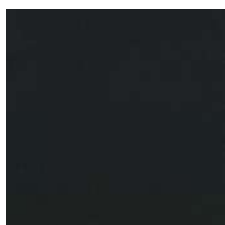
Gypsy-895



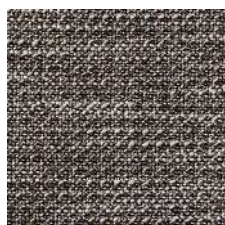
Divina 3 224



Oxford-893



Divina 3-191



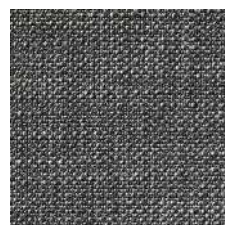
Oxford-897



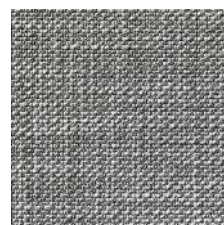
Flair-121



Oxford-999



Gypsy-997



Gypsy-995

Finiture / Finishes

Tessuto Vari / Fabric Various



Nylul 002



Nylul 003



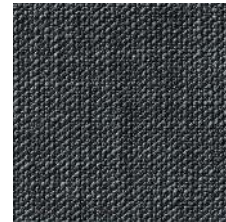
Flair 166



Oxford-889



Flair-164



Gypsy-699



Nylul 004



HURLUBERLU 003



HURLUBERLU 004

Pelle / Leather Color Sphere PF



SC 06 Calicot



SC 23 Tortora



SC 32 Caolino



SC 51 Panna



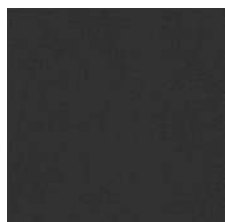
SC 31 Quarzo Fumè



SC 34 Maggese



SC 26 Topo



SC 20 Inchiostro



SC 21 Amianto



SC 53 Creta



SC 55 Camel Hair



SC 52 Daino



SC 66 India



SC 59 Noce di Pecan



SC 80 Bruno Havana



SC 29 Ardesia



SC 148 Lacca



SC 146 Coccio Pesto



SC 173 Glauco



SC 177 Limo



SC 178 Alpi



SC 254 Steel Blue



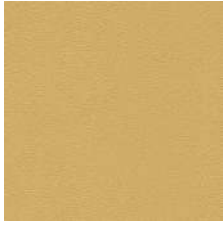
SC 278 Atlantic Blue



SC 279 Alchemy

Finiture / Finishes

Pelle / Leather Color Sphere PF

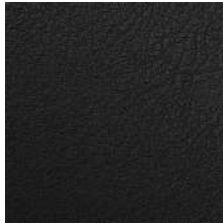


SC 133 Paglierino

PELLE SUPERIOR / SUPERIOR LEATHER



201 Testa di moro



202 Antracite



204 Fango



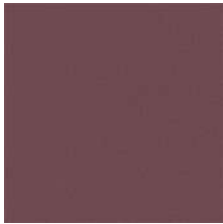
Velvety - Black Pepper



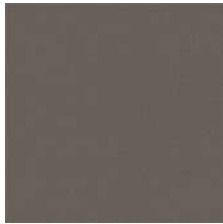
Velvety - Clary Sage



Velvety - Cumin



Velvety - Deep
Lavender



Velvety - Grey Salt



Velvety - Juniper



Velvety - Paprika



Velvety - Rosemary



Velvety - Saffron



Velvety - Sesame