

Hypnos

design Roberto Lazzeroni

Caratteristiche tecniche - Poltroncina realizzata in massello di noce americano. Seduta in multistrato imbottita.

Technical features - Armchair with structure in solid American walnut. Seat in upholstered plywood.

Nota - Specificare la finitura del legno, tra quelle presenti a campionario. Costo aggiuntivo per finitura gommalacca.

Note - Specify the finish of the wood, among those in the sample collection. Additional cost for shellac finish.



74
29" 1/8

82
32" 1/4



60
23" 5/8

44
17" 3/8

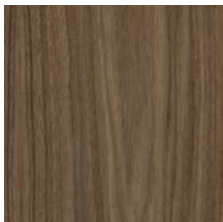
63
24" 3/4

c.o.m. (l.mt.0,80/sq.mt.1,20)

volume m³ 0,515 - **kg.** 12,5

Finiture / Finishes

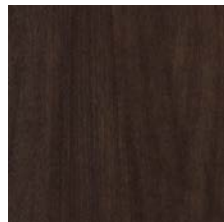
Legno Noce / Wood Walnut



Noce
Walnut



Noce dark
Walnut dark



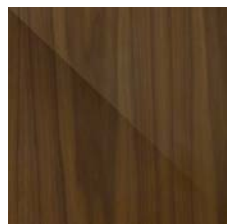
Noce moka
Walnut moka



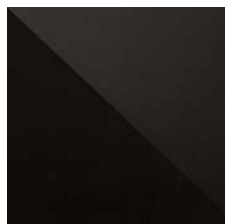
Noce brown
Walnut brown

Finiture / Finishes

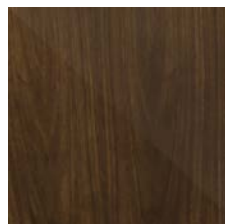
Legno Gommalacca / Wood Shellac



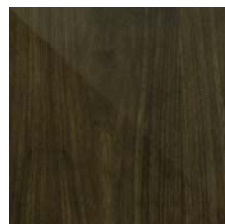
Noce Am. gommalacca
naturale
*Am. walnut natural
shellac*



Noce Am. gommalacca
nera
Am. walnut dark shellac



Noce Am. olio iris
Am. walnut Iris oil



Noce Am. olio nero
Am. walnut black oil

Tessuto Velluti e Ciniglie / Fabric Velvet and Chenille



Belsuede-029



Belsuede-032



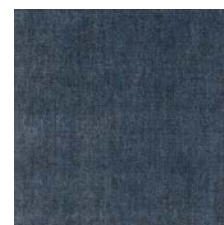
Belsuede-015



Belsuede-014



Belsuede-01



Belsuede-036



Belsuede-016



Belsuede-017



Belsuede-040



Belsuede-034



Belsuede-010



Belsuede-011



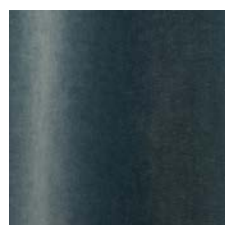
Belsuede-012



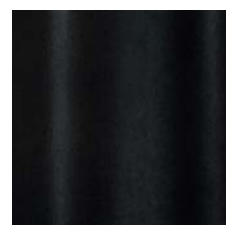
Belsuede-039



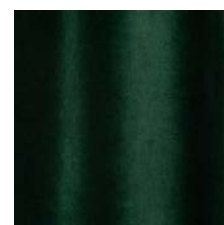
Amazonie-041



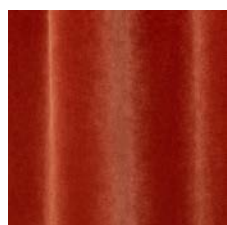
Amazonie-042



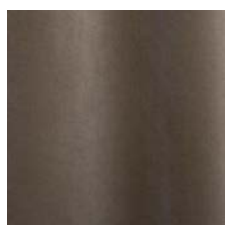
Amazonie 002



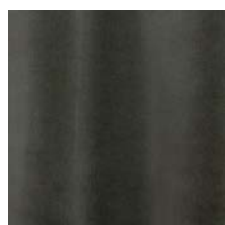
Amazonie 022



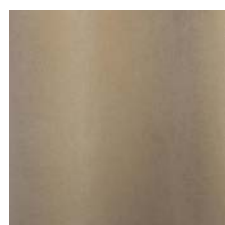
Amazonie 025



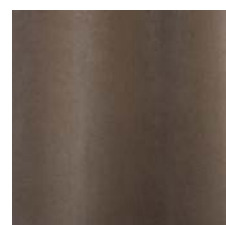
Amazonie 045



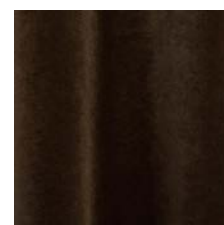
Amazonie 040



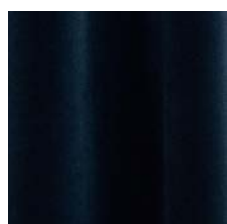
Amazonie 043



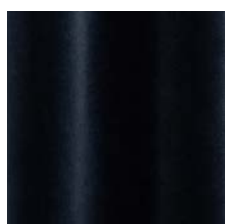
Amazonie 036



Amazonie 038



Amazonie 037



Amazonie 035

Finiture / Finishes

Tessuto / Fabric Bouclé



Verone Creme



Monza 00



Mies-005



Monza 09



Mies-004



Monza 07



Monza 97



Monza 84



Monza 58



Monza 27



Monza 48



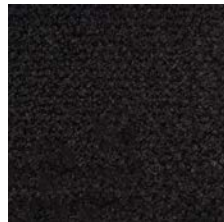
Monza 45



Verone Nuit



Mies-020

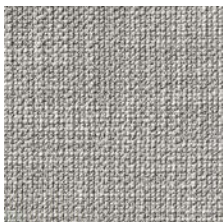


Monza 88



Mies-008

Tessuto Vari / Fabric Various



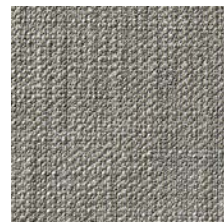
Gypsy-892



Flair-108



Nyul 001



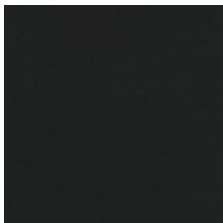
Gypsy-895



Divina 3 224



Oxford-893



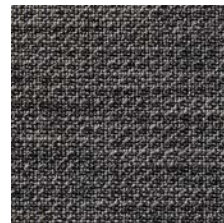
Divina 3-191



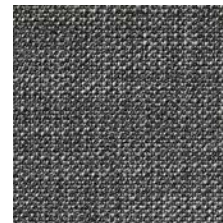
Oxford-897



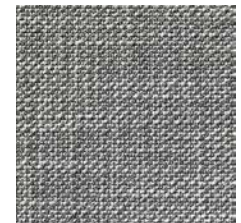
Flair-121



Oxford-999



Gypsy-997



Gypsy-995



Nyul 002



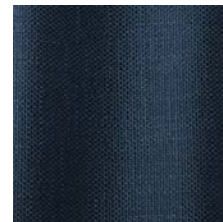
Nyul 003



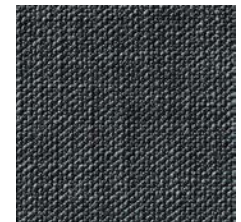
Flair 166



Oxford-889



Flair-164



Gypsy-699

Finiture / Finishes

Tessuto Vari / Fabric Various



Nylul 004

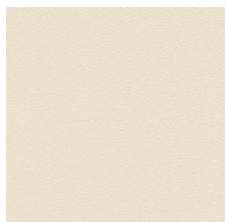


HURLUBERLU 003



HURLUBERLU 004

Pelle / Leather Color Sphere PF



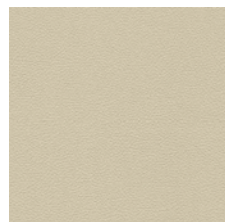
SC 06 Calicot



SC 23 Tortora



SC 32 Caolino



SC 51 Panna



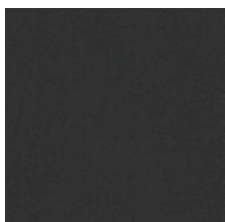
SC 31 Quarzo Fumè



SC 34 Maggese



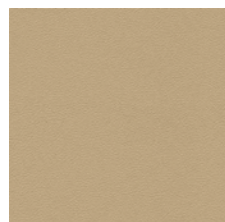
SC 26 Topo



SC 20 Inchiostro



SC 21 Amianto



SC 53 Creta



SC 55 Camel Hair



SC 52 Daino



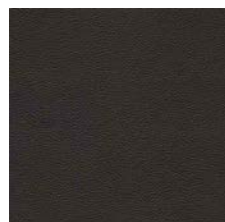
SC 66 India



SC 59 Noce di Pecan



SC 80 Bruno Havana



SC 29 Ardesia



SC 148 Lacca



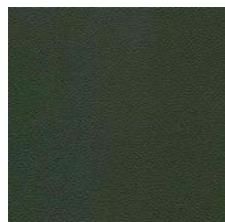
SC 146 Coccio Pesto



SC 173 Glauco



SC 177 Limo



SC 178 Alpi



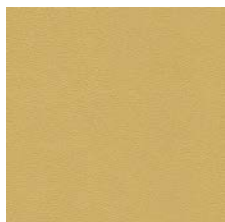
SC 254 Steel Blue



SC 278 Atlantic Blue



SC 279 Alchemy



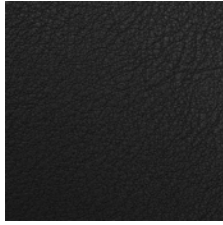
SC 133 Paglierino

Finiture / Finishes

PELLE SUPERIOR / SUPERIOR LEATHER



201 Testa di moro



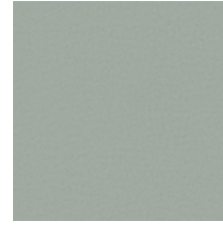
202 Antracite



204 Fango



Velvety - Black Pepper



Velvety - Clary Sage



Velvety - Cumin



Velvety - Deep
Lavender



Velvety - Grey Salt



Velvety - Juniper



Velvety - Paprika



Velvety - Rosemary



Velvety - Saffron



Velvety - Sesame